

PROVIDENCE, R. I.
CITY ENGINEER'S OFFICE
STREET LINE DEPT.

Mar. 15, 1889

014-790

Providence R.I.
This plat accompanies
our report of this date

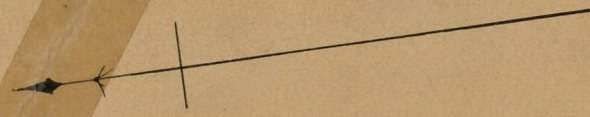
PLAT OF
DELAHUNT STREET

FROM VEAZIE ST. TO BRANCH AVE.

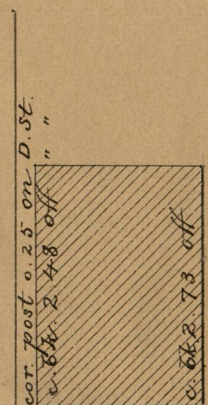
IN TWO SHEETS

SCALE 30 FEET PER INCH

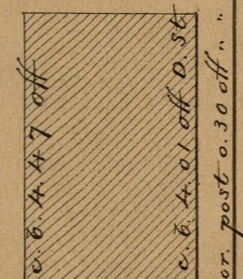
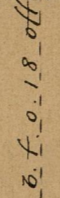
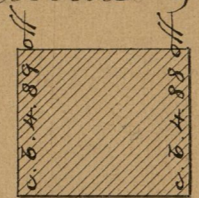
Changed to Moy St. Sept. 20, 1900.



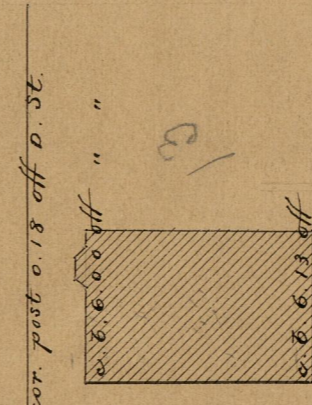
BRANCH AVENUE



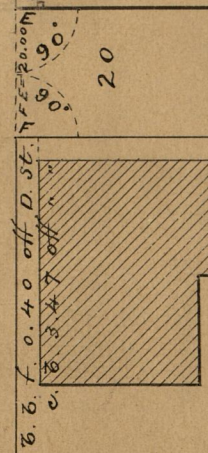
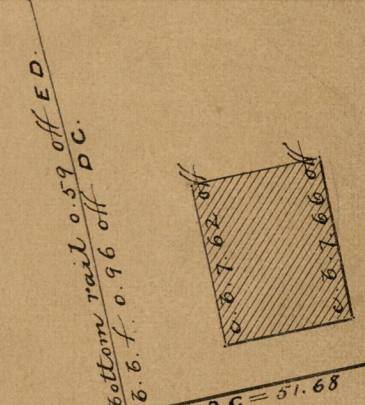
Gustav Riccius & wife Anna



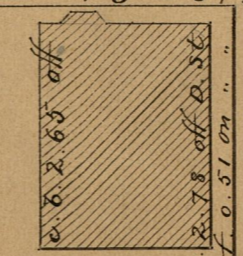
STREET



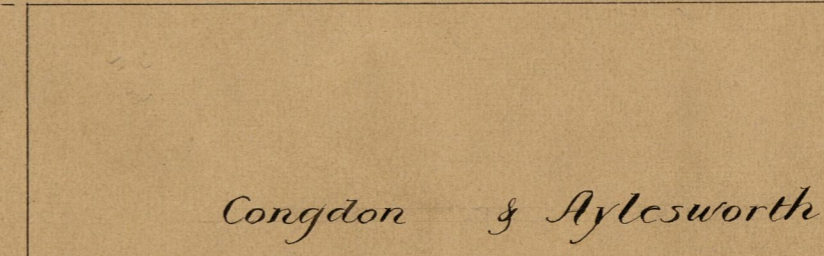
Julia Sweeney



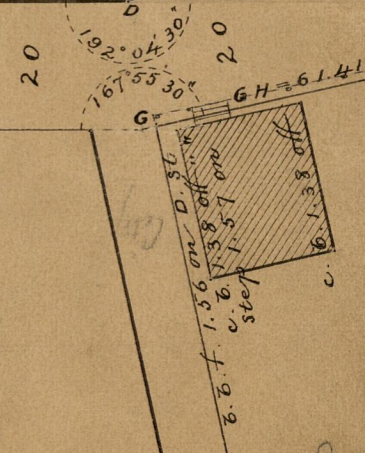
Thomas Moy



HENRIETTA



Congdon & Aylesworth



ED = 375.79

FG = 377.91

OFFICE No. 9974
DRAWER " 83
SHEET " B-71

83
B-71